

TECHIM
MATERIALS FOR SMILES
GENERAL CATALOGUE



Back when everything began

1975

TECHIM GROUP was born, thanks to the initiative of a group of chemical engineers specialised in surface treatment of precious metals and with extensive experience in the metallurgical field.

At first, its sales marketing department was oriented towards the implementation of new and innovative products used by several companies from the goldsmith sector; but very short afterwards, in view of the validity of its products, it specialised in the field of dental products.

1985

It started producing gypsum and dental investments, which immediately led to a significant increase in the turnover and important collaborations, thus enabling the Company to expand the radius of sale beyond the Italian borders.

1994

With a significant investment, **the production of silicones**, for both the dental and the industrial fields, was developed.

1997

TECHIM decided to get certified with the ISO 9001 and ISO 13485 Quality System. All Techim products within the medical sector belong to classes I or IIa DIR.93/42/EEC, and those belonging to class IIa are certified by a notified body.

2005

Thanks to the network of relations that the Techim Team and its dealers have been able to manage over these years, not only products but also markets could be renewed. **Our 3,000 customers are often our commercial points of reference as well**: as a matter of fact, they are the ones who point us and direct us towards new and possible markets, confident in the quality assurance of our offer.

TODAY

TECHIM GROUP is configured as a company destined to satisfy the most generous and rewarding professional expectations within the field of the most ambitious dentistry-prosthetics.

In our new catalogue, you can find all the latest news proposed according to the product family: a result, rather than a mere list of information, that TECHIM wants to share with all those who have made it possible thanks to their constant investment in research and development, guaranteeing state-of-the-art goals resulting from taking chances and experimenting, two ingredients that have turned the Techim Formula into a winning product.

And the story continues.

9

GYPSUM

21

INVESTMENTS

27

SILICONES

41

ALLOYS

45

RESIN

53

THERMOPLASTIC MATERIALS

61

DISKS

69

SANDS

75

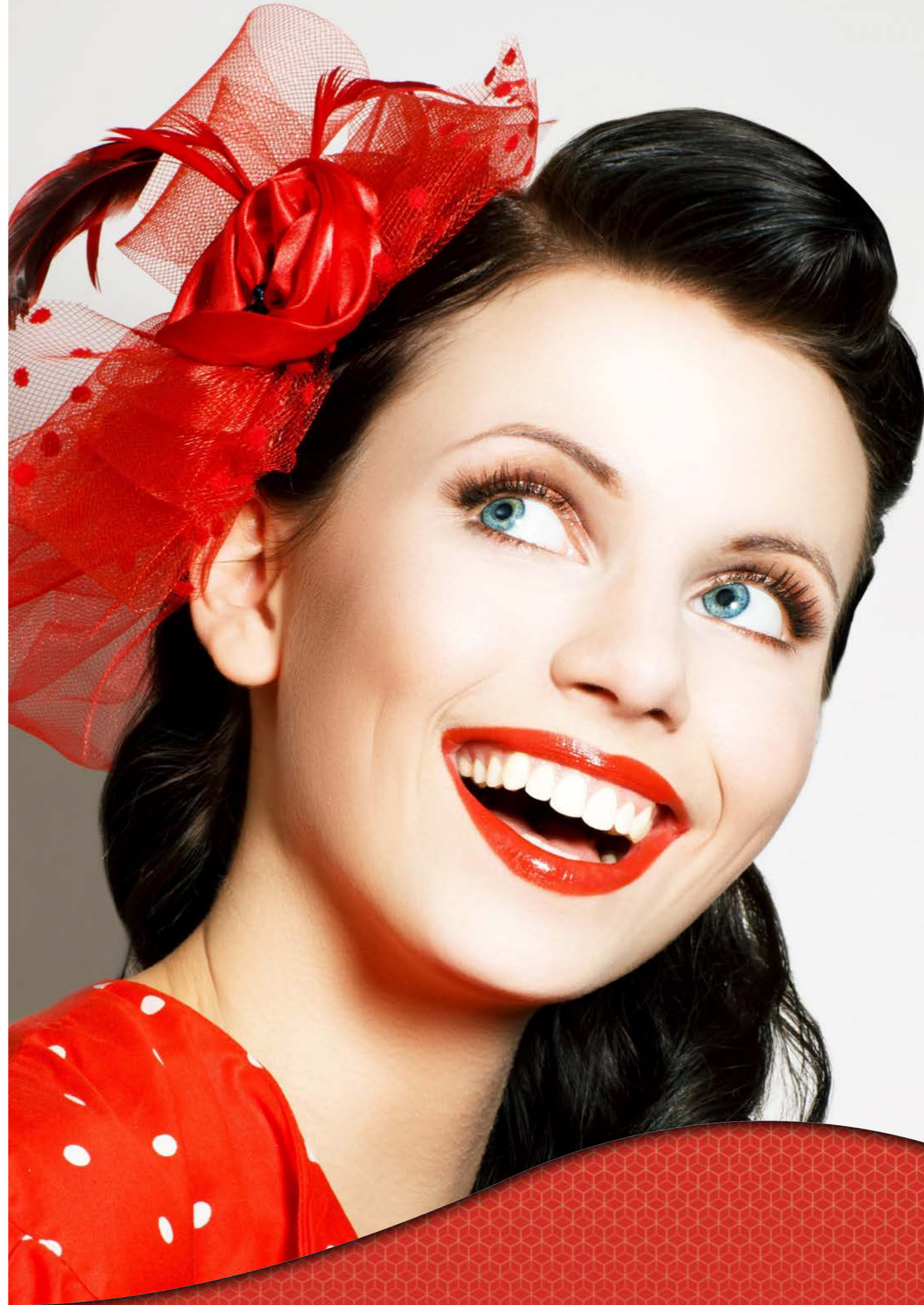
ACIDS

79

WAXES

91

MISC



GYPSUM 9

GYPSUM CLASS IV



T6



Gypsum with high physical properties suitable for all types of prosthetic works and ideal for dies. It guarantees excellent precision in details and high stability under pressure.

Features:

- High compression resistance
- High fluidity, thixotropic
- Quick and easy to use
- Excellent performance under mill

Colours and packaging:

White: 500 g sachet (Pack of 10)

Ivory (ideal for Cad Cam scanner): 500 g sachet (Pack of 10) or 500 g sachet (Pack of 40)

A.P.R. (Apricot): 500 g sachet (Pack of 10)/500 g sachet (Pack of 40)

| | | | |
|--------|-----------|--------|----------|
| Codes: | GES000004 | white | 10x500 g |
| | GES000025 | ivory | 10x500 g |
| | GES000054 | ivory | 40x500 g |
| | GES000026 | a.p.r. | 10x500 g |
| | GES000055 | a.p.r. | 40x500 g |

TC15



Extra-hard gypsum for dies and antagonist models. Resin free, it offers high hardness and precision. It is indicated for the development of models with plastic base.

Features:

- High abrasion resistance
- Thick paste
- Good definition of details
- High mechanical features
- Excellent castability under vibration

Colours and packaging:

Hazelnut: 500 g sachet (Pack of 10)/ 20 kg drum

| | | | |
|--------|-----------|----------|----------|
| Codes: | GES000518 | hazelnut | 20 kg |
| | GES000515 | hazelnut | 10x500 g |

DEEP ROCK



Hard gypsum for antagonist models and removable prostheses. Formulated in order to obtain excellent compatibility with alginates. Thanks to its particular hardness and fluidity, it can be used for all types of models.

Features:

- Excellent resistance to thermal shocks
- Creamy paste
- Low expansion
- Thixotropic so as to make the model creation easier

Colours and packaging:
Pink / Grey: 20 kg drum

Codes: GES000051 pink 20 kg
GES000016 grey 20 kg

PLAST ROCK



Extra-hard gypsum for dies, suitable for all types of prosthesis works in which high precision and great definition are required. Due to its fluidity, it is indicated for the development of rigid bases.

Features:

- Highly fluid gypsum
- Excellent compatibility with casting materials
- For easier and faster mixing, wet the powder abundantly
- High compression resistance

Colours and packaging:
Ivory: 500 g sachet (Pack of 10)
A.P.R (Apricot): 500 g sachet (Pack of 10)

Codes: GES000023 ivory 10 x 500 g
GES000024 a.p.r 10 x 500 g

FANTASY ROCK



New generation of extra-hard gypsum, ideal for dies and for all types of prosthetic works guaranteeing high precision and stability. Excellent resistance of the borders and high precision in the reproduction of details.

Features:

- High mechanical features
- Marble and velvety appearance
- Extremely fluid
- Low expansion even after 48 hours
- High compression resistance
- Perfect adjustment with the prosthetic work

Colour and packaging:
Cream: 500 g sachet (Pack of 10)

Code: GES000045 cream 10 x 500 g

PRO ROCK



High expansion Gypsum particularly ideal for thermoplastic resins as it compensates for retraction.

Features:

- High mechanical features
- Marble velvety appearance
- Its high expansion compensates for the retraction of the thermoplastic resins at the time of the injection

Colours and packaging:
Pink: 5 kg bag

Codes: GES000035 pink 5 kg

SUPER STONE



High resistance and low expansion gypsum, indicated for the development of antagonist models and for frame work and removable prostheses. Compatible with all casting materials and with a limited occlusal abrasion.

Features:

- High hardness
- Creamy paste
- Good reproduction of details
- Smooth, hard and precise surface
- Good reproduction of details

Colours and packaging:
Pink/Green/White: 20 kg drum

Codes: GES000031 pink 20 kg
GES000036 green 20 kg
GES000037 white 20 kg

ORTO STONE



Extra-white hard gypsum for making antagonist and orthodontic models

Features:

- Colour: extra-white
- Thixotropic
- Microfine grained
- Easy to polish
- Plastic

Colour and packaging:
Extra-white: 5 kg bag / 20 kg drum

Codes: GES000151 white 20 kg
GES000530 white 5 kg



Gypsum for Orthodontic models. Special formula with long setting times. Super white with excellent precision guaranteeing excellent aesthetic results.

Features:

- Extra-white
- High hardness
- Thixotropic

Colours and packaging:
Extra-white: 20 kg drum

Code: GES000038 extra-white 20 kg



Hard gypsum for making antagonist models and muffles in removable prostheses. Superior characteristics compared to other gypsum of the same class. As it is thixotropic, the model creation is made easier.

Features:

- Creamy paste
- Compact
- Good reproduction of details

Colour and packaging:
Yellow: 20 kg drum

Code: GES000181 yellow 20 kg



Gypsum for fluid casting bases to be used with rubber moulds. It is ideal for the production of bases with the split-cast technique and for the counter moulds of the muffles.

Features:

- Extremely fluid casting
- Self-levelling
- Very low expansion
- High mechanical features

Colour and packaging:
White/ Grey: 5 kg bag

Codes: GES000003 white 5 kg
GES000011 grey 5 kg



Extrafine, fast setting and low expansion gypsum. Indicated for mounting master casts on individual articulator, for the production of precision masks, for the moulds of the muffles.

Features:

- Thixotropic
- Very low expansion
- Excellent malleability
- Extra-white
- Perfect fixing of the models in articulator

Colours and packaging:
White: 4.5 kg bag / 20 kg drum

Codes: GES000525 white 4.5 kg
GES000528 white 20 kg

GYP SUM CLASS III



Hard gypsum for making antagonist models, for orthodontic prostheses and removable prostheses. Good reproduction of details. It is compatible with all casting materials.

Features:

- Good final hardness
- Compact
- Creamy paste

Colour and packaging:
White: 20 kg drum

Code: GES000131 white 20 kg



Hard gypsum for making antagonist models, frame work prostheses and removable prostheses. Thixotropic in order to make the model creation easier.

Features:

- Creamy paste
- High mechanical features
- Good reproduction

Colour and packaging:
Yellow: 20 kg drum

Code: GES000080 yellow 20 kg

GYP SUM CLASS II

DIPHO
STONE



Economical gypsum for mounting models in articulator and occluder, for putting the total prostheses in muffle and for making masks of the frame work prosthesis. It offers a solution for any type of dental technique.

Features:

- Thixotropic
- Fast setting times
- Low expansion
- Setting plastic phase
- Excellent malleability

Colour and packaging:
White: 18 kg drum

Code: GES000557 white 18 kg

PLASTIC
GIPS



Special additive with added resin for class IV gypsum. Replaces distilled water and does not affect the gypsum expansion.

Features:

- Improves the gypsum superficial smoothness
- Reduces the possibility of chipping when working with mills

Colour and packaging:
Colourless/Black/Blue/Red/Yellow: 1 l bottle

Codes: GES000141 white 1 l
GES000201 black 1 l
GES000202 blue 1 l
GES000203 red 1 l
GES000204 yellow 1 l

ALBA
STONE



Special gypsum mixture indicated for model base, for mounting in occluder and for countermould in muffle. It is a fine grained ventilated gypsum with setting plastic phase.

Features:

- More resistant to compression than alabastrine
- Suitable for packing and putting in muffle complete and partial denture prostheses;
- Easy to devest

Colours and packaging:
White: 18 kg drum

Code: GES000179 white 18 kg

S.O.R.



Chemical solution to neutralize alginic acid. Reduces the chemical reaction between the gypsum and alginate, eliminating impurities and dusting on gypsum models

Features:

- Easy to use
- It can be used with all alginates
- It does not damage the impressions

Packaging:
1 l bottle

Code: GES000144 1 l

ADDITIVES FOR GYP SUM

DURCI
STONE



Lacquer to seal and strengthen the edges of the gypsum die.

Features:

- Transparent
- No thickness
- Leaves the die surface harder and smoother
- Water repellent
- Package including dosing brush

Packaging: 15 ml bottle

Code: VAR000122 15 ml

ISOGIPS



Isolating material specifically for gypsum, separates gypsum from gypsum.

Features:

- Practical spray bottle
- Does not affect dimensions

Packaging:
100 ml spray

Code: ISO000040 100 ml spray



Alginate-based isolating material to separate gypsum from resin.

Characteristics:

- Minimum thickness
- Perfect separation between gypsum and resin
- Easy to spread

Packaging: 1 l Bottle

Code: ISO000011



| PRODUCT NAME | MIXING RATIO | WORKING TIME AT 23°C | SETTING TIME AT 23°C | EXPANSION AFTER 2 HOURS | COMPRESSION RESISTANCE 1H |
|--------------|-------------------------|----------------------|----------------------|-------------------------|---------------------------|
| T 6 | 20 ml 100g gypsum | > 6 min | > 10 min | < 0.08% | > 45 N/mm ² |
| PLAST ROCK | 18/20 ml 100g gypsum | > 7 min | > 14 min | < 0.08% | > 45 N/mm ² |
| FANTASY ROCK | 20 ml 100g gypsum | > 5 min | > 12 min | > 0.05 % | > 47 N/mm ² |
| TC 15 | 20 ml 100g gypsum | > 5 min | > 10 min | < 0.08% | > 45 N/mm ² |
| PRO ROCK | 20 ml 100g gypsum | > 6 min | > 10 min | > 0.35 % | > 45 N/mm ² |
| DEEP ROCK | 25 ml 100g gypsum | > 5 min | < 13 min | 0.1 % | > 35 N/mm ² |
| SUPER STONE | 25 ml 100g gypsum | > 5 min | < 13 min | < 0,1 % | > 35 N/mm ² |
| ORTO STONE | 25 ml 100g gypsum | > 5 min | < 10 min | < 0,1 % | > 35 N/mm ² |
| BASE STONE | 23/25 ml 100g gypsum | > 5 min | < 13 min | < 0.06 % | > 35 N/mm ² |
| FLASH | 28 ml 100g gypsum | > 7 min | < 12 min | < 0.20 % | > 28 N/mm ² |
| ORTOGIPS | 27 ml 100g gypsum | < 8 min | < 14 min | < 0,15 % | > 30 N/mm ² |
| ARTIC STONE | 30 ml 100g gypsum | N.C | 4 min | < 0.05% | > 12 N/mm ² |
| SCOOP | 28 ml 100g gypsum | < 5 min | < 12 min | < 0,15 % | > 30 N/mm ² |
| DIPHO STONE | 30 ml 100g gypsum | N.C | 5 min | < 0.08% | > 16 N/mm ² |
| ALBA STONE | 45 ml 100g gypsum | 5 min | > 5.30 min | < 0.30 % | > 16 N/mm ² |



ERMES



Phosphate-bonded investment for high precision casting developed for fast-fire or traditional processes. Graphite free. Also suitable for pressed ceramics.

Features:

- High casting fluidity
- High precision casting is obtained
- Excellent reproducibility and superficial smoothness
- Compatible with non-precious and precious alloys and pressable ceramics
- It can be used with the free or controllable expansion technique

Packaging:

5 kg bag / 40 sachets x 160 g

Codes: RIV000300 5 kg
RIV000016 40x160 g

MAGIC VEST II



Phosphate-bonded investment without graphite, fast-fire and traditional process. It can be used in the fast procedure without time constraints and at the desired final temperature.

Features:

- Suitable for all types of alloys
- High precision and superficial smoothness
- Easy to clean up
- It can be used with the free expansion technique
- Equal expansion with either the fast or the traditional procedure

Packaging:

50 sachets x 90 g / 60 sachets x 60 g

Codes: RIV000703 50x90 g
RIV000704 60x60 g

T.C. VEST



Phosphate-bonded investment without graphite with traditional ascent, fine grain. Particularly indicated for the casting of fixed prostheses with all types of alloys, from Cr-Co to noble alloy.

Features:

- Smooth surfaces
- Excellent definition
- High precision
- It can be used with or without metal cylinder

Packaging:

100 sachets x 90 g / 5 kg bag

Codes: RIV000110 100x90 g
RIV000510 5 kg



FREE VEST



Microfine grained investment for use where higher reliability is required. Can be used with fast-fire and slow-fire. Also for the free expansion technique.

Features:

- Expansion easy to control
- Fine consistency
- Smooth surfaces of the alloy after casting
- Suitable for all types of metals: from gold to non-precious alloys
- Ideal for pressed ceramic
- Excellent precision

Packaging:

38 sachets x 160 g

Code: RIV000001 38x160 g

FREE VEST LIQUID



Special liquid for expansion control only for Free Vest.

Features:

- Sensitive to cold
- It can be mixed with distilled water

Packaging:

1 L bottle

Code: RIV000002 1 l

ABACUC



Phosphate-bonded investment for type 2 framework prostheses, quick and traditional. Excellent fluidity.

Features:

- Fine grained powder
- Ideal for the fast-fire or traditional heating process
- Compatible with silicone and duplication gelatine
- Very smooth surfaces
- Stable borders
- Free or controllable expansion
- Compatible with all alloys

Packaging:

80 sachet x 200 g + 1 Sil

Code: RIV0000011 80x200 g + 1 Sil

HI-SALD



Gypsum-bonded investment for soldering, 'fast-fire' type. It does not require preheating. Indicated for primary soldering.

Features:

- Excellent precision and stability
- High reliability
- High dimensional stability and resistance to cracks
- Quick to clean up
- Expansion on setting < 0.15% after 2 hours

Packaging:

5 kg bag / 1.8 kg can

Codes: RIV000532 5 kg
RIV000533 1.8 kg

SIL



SIL 30% and 40% for high expansion. Special liquid for expansion control for phosphate-bonded investments.

Features:

Normal version 30 %
For high expansion 40%
Withstands temperatures not below 5°C

Packaging:

1 l bottle

Codes: RIV000140 30% 1 l
RIV000141 40% 1 l blue colour

GLAS FIRE



Refractory ceramic fibre used to compensate for investment expansion. Technique adopted with cylinders.

Features:

- Asbestos free
- Thickness: 1 mm
- Height: 45 mm
- It does not burn
- Impermeable
- Easy to apply

Packaging:

roll 1 mm thick, 45 mm high, 20 m long

Code: RIV000170



FLUID SILICONES FOR ADDITION

VISIONSIL

VISIONSIL 45 SHORE A / 70 SHORE A.

Fluid transparent addition silicone. Suitable for the pressing and injection technique to use with light curing resins.

Features:

- Easy application
- No risk of bubble formation
- It is not distorted
- Long working time
- Thixotropic
- Highly transparent with excellent passing of UVA rays
- Colour: translucent

VISIONSIL 45 Shore A Working time at 23°C: 1' 30"
 VISIONSIL 70 Shore A Working time at 23°C: 25"
 VISIONSIL 45 Shore A Setting time at 23°C: ≤ 20'
 VISIONSIL 70 Shore A Setting time at 23°C: ≤ 8'

Packaging:

2 cartridges x 50 ml + 10 nibs

Codes: SIL000108 VISIONSIL 45 SHORE
 SIL000040 VISIONSIL 70 SHORE

VEROSIL 45 SHORE A.

Fluid, low transparency addition silicone.

Features:

- Translucent
- Indicated for light curing compounds

Working time at 23°C: 25'
 Working time at 23°C: ≤ 180'

Packaging:

1 kg A + 1 kg B / 5 kg A + 5 kg B

Codes: SIL000110 1 kg + 1 kg
 SIL000111 5 kg + 5 kg

HARDUPLEX TRANSPARENT



HARDUPLEX TRANSPARENT 20 SHORE A.

Transparent silicone to use with light curing resins. Once polymerisation is completed, a glass transparent colour remains.

Features:

- Compatible with gypsum and investments
- Transparent

Working time at 23°C: 3'
 Working time at 23°C: ≤ 30'

Packaging:

1 kg A + 1 kg B / 5 kg A + 5 kg B

Codes: SIL000077 1 kg A + 1 kg B
 SIL000078 5 kg A + 5 kg B

HARDUPLEX



12 SH Light blue
 18 SH Pink-T
 20 SH Blue
 23 SH Yellow
 30 SH Green

Platinic-based addition silicone for duplication in laboratory. Ideal for the duplication of models in the frame work prosthesis with undercuts in which maximum precision is required. Thanks to its chemical-physical properties, it meets all the necessary requirements for the duplication in muffle.

Features:

- 5 Hardness SH A and 5 different colours
- 1:1 mixing ratio
- 99.95% of elastic memory return
- High precision
- High casting fluidity
- High tearing resistance
- High translucency

Advantages:

- Simple dosage
- Compatible with gypsum, phosphate-bonded investments and acrylic resins
- Excellent reproduction of details
- It is not distorted during the model removal
- High reproduction of details

HARDUPLEX 20/23/30 Shore A Working time at 23°C: 3'
 HARDUPLEX 12/18 Shore A Working time at 23°C: 4' 30"

HARDUPLEX 20/23/30 Shore A Setting time at 23°C: ≤ 15'
 HARDUPLEX 12/18 Shore A Setting time at 23°C: ≤ 30'

Packaging:

1 kg A + 1 kg B / 5 kg A + 5 kg B

Codes:

SIL000120 1 kg A+ 1 kg B HARDUPLEX 12 SHORE
 SIL000121 5 kg A+ 5 kg B HARDUPLEX 12 SHORE

SIL000310 1 kg A+ 1 kg B HARDUPLEX 18 SHORE
 SIL000311 5 kg A+ 5 kg B HARDUPLEX 18 SHORE

SIL000092 1 kg A+ 1 kg B HARDUPLEX 20 SHORE
 SIL000093 5 kg A+ 5 kg B HARDUPLEX 20 SHORE

SIL000116 1 kg A+ 1 kg B HARDUPLEX 23 SHORE
 SIL000117 5 kg A+ 5 kg B HARDUPLEX 23 SHORE

SIL000047 1 kg A+ 1 kg B HARDUPLEX 30 SHORE
 SIL000048 5 kg A+ 5 kg B HARDUPLEX 30 SHORE

REBASING

REBASING does not require hot polymerisation and is applied directly on the prosthetic base and becomes set quickly, both in the mouth and in the muffle without any exothermic reaction. Class IIa medical device.

Features:

- Soft, non-porous, silicone-based material
- for long-term relining. To be used at the dental practice or in the laboratory.
- Adhesion to any acrylic resin for prostheses thanks to the excellent adhesive primer
- Long-term comfort for the patient - free from irritating and plasticizing materials
- Biocompatible and biodegradable, odourless and tasteless
- It does not discolour
- Hardness 35 SH

Advantages:

- Pad for acute alveolar processes
- Relining in implantation
- Readjustment of prostheses
- Methacrylate free
- Odourless and tasteless

Packaging (kit):

1 x 50 ml cartridge + 1 x 5 ml primer
1 lacquer for polishing (a+b) + 6 mixers

Code: SIL000098

GENGISIL NEW 70 SHORE A.

Fluid addition silicone for the production of false gums for fixed prostheses.

Features:

- Natural pink
- Resistant
- Self-mixing system in cartridge that favours the product application in the gums reproduction.

Advantages:

- Millable
- Precise and stable
- Easy application
- Definition of edges

Working time at 23°C: 1'
Working time at 23°C: ≤ 8'

Packaging: 2 cartridges x 50 ml + 10 nibs
+ 5 interoral tip + Isosil

Code: SIL000025



GENGISIL

GENGISIL 80 SHORE A.

Fluid addition silicone for the production of false gums for fixed prostheses. The superior hardness makes milling easier while finishing the false gums on the model.

Features:

- Natural pink
- Rigid
- Self-mixing system in cartridge that favours the product application in the gums reproduction

Advantages:

- Millable
- Precise and stable
- Easy application
- Definition of edges

Working time at 23°C: 1'10"
Working time at 23°C: ≤ 6'

Packaging:

2 cartridges x 50 ml + 10 nibs + 5 interoral tip + Isosil

Code: SIL000107

BEN POSITION

BEN POSITION

Ben Position is a poly-addition silicone that is born from the idea of the dental technician Benny Fiandaca. Ben Position has multiple advantages compared to traditional techniques of casting of position impressions, in particular, with respect to the metal-free machining, zirconium, disilicate, Peek and PMMA, but also for the metal-ceramic. The hardness of 85 SH allows a good stability of the product and two colors are available: A2 and A3.

Features:

- Addition silicone in cartridge
- In addition to reproduce the position, it reproduces the mucosa
- Being of similar color to that of the tooth, it doesn't interfere optically in the layering phase of the metal-free materials
- Even flipping it, being fairly tight even without using a spacer, stays stable and friction without falling from the model
- There is no longer the need to isolate the plaster model in the layering phase, since the silicon, that is already oily, facilitates the detachment of the ceramic or composite from the model.
- No more broken edges or caps, if poorly insulated.
- Scannable material

Working time at 23 ° C: 1'15 "
Setting time at 23 ° C: ≤ 6'

Packaging:

1 cartridge 50 ml color A2 x 1 cartridge 50 ml color A3
+ 10 mixers + 5 interoral tips

Code: SIL000002

PUTTY SILICONES FOR ADDITION

HD SIL



90 Shore A orange
80 Shore A light blue
70 Shore A yellow

Putty addition silicone with 1:1 mixing ratio. HD SIL can be modelled during working and is rigid once hardening is completed, but it keeps the values measured unaltered. Due to its ease of use, it is ideal for the pressed ceramic technique, total prostheses, and masks.

Features:

- High final hardness
- Dimensional stability
- It does not irritate the skin
- Resistant to temperature

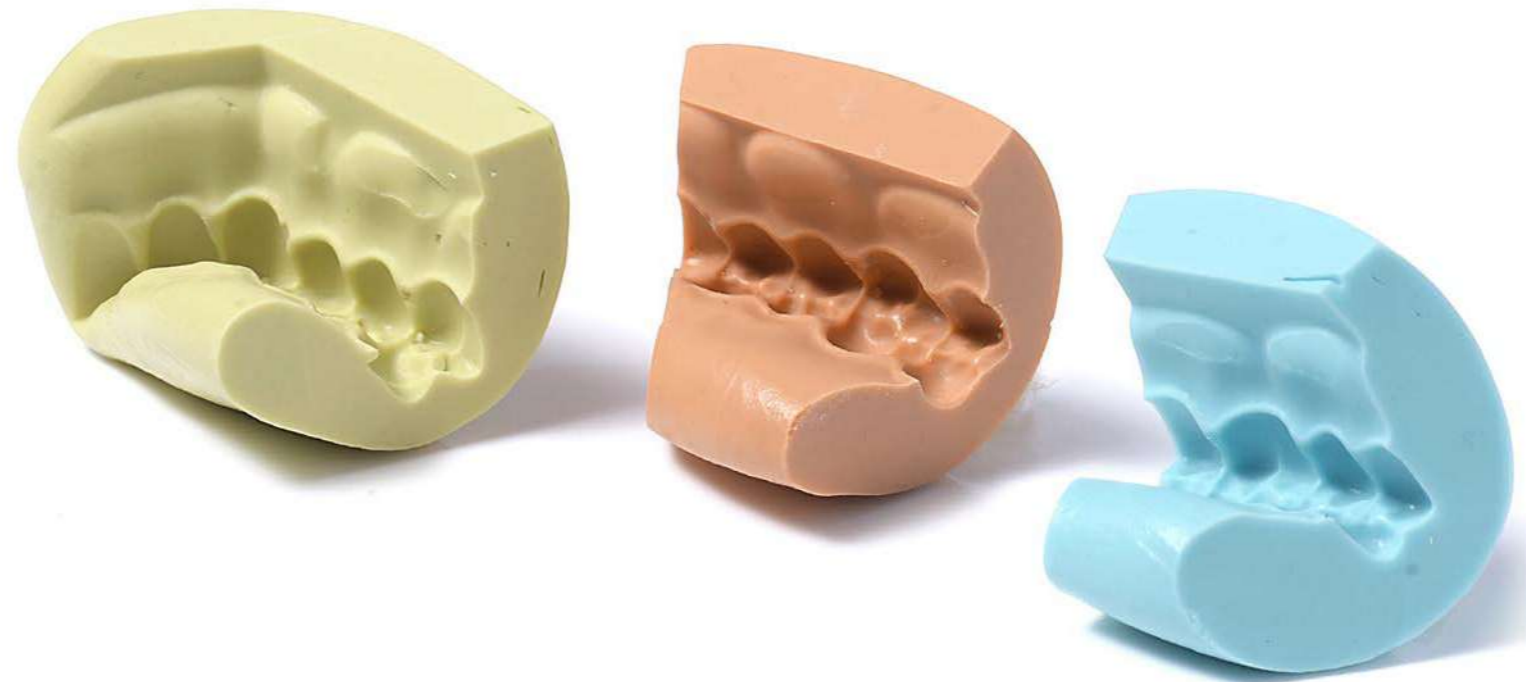
Advantages:

- Unalterable over time
- High detail
- Millable
- Low linear retraction
- Easy to use
- No deformation in muffle

HD SIL 90 Shore A Working time at 23°C: 1' 20"
HD SIL 70/80 Shore A Working time at 23°C: 1' 40"
HD SIL 90 Shore A Working time at 23°C: ≤ 6'
HD SIL 70/80 Shore A Working time at 23°C: ≤ 6'

Packaging: 5 kg A + 5 kg B + 2 measuring spoons

Codes: SIL000021 5 kg A + 5kg B HD SIL 90 Shore
SIL000027 5 kg A + 5kg B HD SIL 80 Shore
SIL000023 5 kg A + 5kg B HD SIL 70 Shore



HD SIL 60



HD SIL 60 SHORE A. Putty addition silicone with 1 to 1 mixing ratio, specifically for masks and for the assembly of saddles on frameworks.

Features:

- Beige
- Minimum dimensional variation
- Excellent definition of details
- Ideal elasticity for position masks
- Occlusal registration
- Blocking of undercuts

Working time at 23°C: 2'
Working time at 23°C: ≤ 6'

Packaging: 1 kg A + 1 kg B + 2 measuring spoons

Code: SIL000068

PUTTY CONDENSATION SILICONES

MASCHERSIL



MASCHERSIL 85 SHORE A.

Condensation silicone used for making masks, for mounting retainers in the plates, for controlling the production of metallic structures and for producing temporary prostheses. Indicated also for isolating teeth/gypsum in muffle.

Features:

- Good paste malleability
- Extremely high fluidity
- Elastic, high ultimate strength
- Excellent elastic memory return
- Excellent heat resistance (147°C)
- Accurate reproduction of details
- It can be mixed with the gel or liquid catalyst
- Colour: whitish

Working time at 23°C: 1' 30"
Working time at 23°C: 4'

Packaging:

5 kg bucket + 3 Gelcat + 1 measuring spoon

Code: SIL000062

HARD MASK



HARD MASK 95 SHORE A.

Extra-hard condensation silicone for making masks, paste models, ideal for the construction of masks, assembly of saddles on frameworks and the production of false gums.

Features:

- Good paste malleability
- Good precision and definition of details
- Resistant to heat (185°C)
- Millable
- It can be mixed with the gel or liquid catalyst
- Colour: light grey

Working time at 23°C: 1' 30"
Working time at 23°C: 4'

Packaging:

5 kg bucket + 3 Gelcat + 1 measuring spoon

Code: SIL 000072

SILICONE INSULATORS

SYLICUM FLUID



Fluid condensation silicone isolator for isolating artificial teeth in the total prosthesis. High compatibility with oral fluids, excellent fluidity on the material of the first impression.

Features:

- Reduces finishing times
- Easy silicone application
- Thixotropic
- Easily removed after firing
- White

Shore hardness A: 50 SH
Working time at 23°C: 1'10"
Working time at 23°C: ≤ 10'

Packaging: 600 g + 1 Velocat + 800 g of retention sand

Code: ISO000032

Poly-addition silicone for the injection and muffle pressing technique for the insulation and protection of acrylic or porcelain teeth during investing. PROSIL is applied in a single procedure on teeth or wax, forming a very hard insulating film that fixes the teeth while applying the resin.

Features:

- Has low viscosity and high final hardness
- Pink

Shore hardness A: 85 SH
Working time at 23°C: approx. 1' 10"
Working time at 23°C: ≤ 6'

Packaging: 4 cartridges x 50 ml + 20 nibs

Code: SIL000011 4 x 50 ml + 20 nibs



DENTAL PRACTICE SILICONES

STAR PUTTY NEW CE



Addition silicone for the detection of the impressions in the oral cavity. Indicated for bridges and crowns, partial prostheses, implantation. In spite of the possible presence of undercuts, the easy removal of the silicone from the oral cavity is guaranteed.

Features:

- 1:1 mixing ratio
- High dimensional stability over time
- Excellent adhesion with the liner material
- Simple to mix

Advantages:

- Unalterable over time
- Accurate impression
- It is not greasy
- Easy to remove from the oral cavity

Shore hardness: 65 SH
Working time at 23°C: 1' 40"
Working time at 23°C: ≤ 3'

Packaging: 450 g part A + 450 g part B

Code: SIL000215

STAR LIGHT BODY RAPID CE



Addition silicone for the double impression technique in the oral cavity. Indicated for bridges and crowns, frameworks and fixed prostheses.

Features:

- 1:1 mixing ratio
- Thixotropic
- Excellent ratio between working time and setting time

Advantages:

- Excellent elasticity
- Possibility of casting several models in the same impression
- Good compatibility with all casting materials
- High fluidity
- Excellent elasticity
- Fast vulcanization times in the oral cavity
- High detection of details

Shore hardness A: 55 SH
Working time at 23°C: 1' 30"
Working time at 23°C: ≤ 2' 00"

Packaging: 2 cartridges x 50 ml + 12 nibs

Code: SIL000100

STAR MIXING NEW



Manual mixer for the addition cartridges.

Packaging: 1 box

Code: SIL000124

XINO ALGIN CE



Alginate for taking impressions in the oral cavity. Indicated in fixed and removable prostheses.

Features:

- Flavoured
- Easy to work with
- High precision
- No drip in the oral cavity
- Excellent elasticity
- Thixotropic

Working time at 23°C: 1' 30"
Working time at 23°C: 3'

Packaging: 2 450 g bags + 2 measuring spoons

Code: SIL000070

STAR REGULAR BODY CE



Addition silicone, with two components, and with low viscosity for the double impression technique in the oral cavity.

Features:

- Mixing ratio: 1:1
- Low linear contraction <0.2%
- Elastic recovery: 99.8%

Advantages:

- Excellent reproduction of details
- Excellent mechanical properties
- Hydrophilic
- Excellent adhesion with the first impression
- High resistance to chemical agents (surgical spirit)
- Excellent compatibility with the materials for the development of models

Shore hardness A: 55 SH
Working time at 23°C: 2'
Working time at 23°C: < 5'

Packaging: 2 cartridges x 50 ml + 12 nibs

Code: SIL000101